

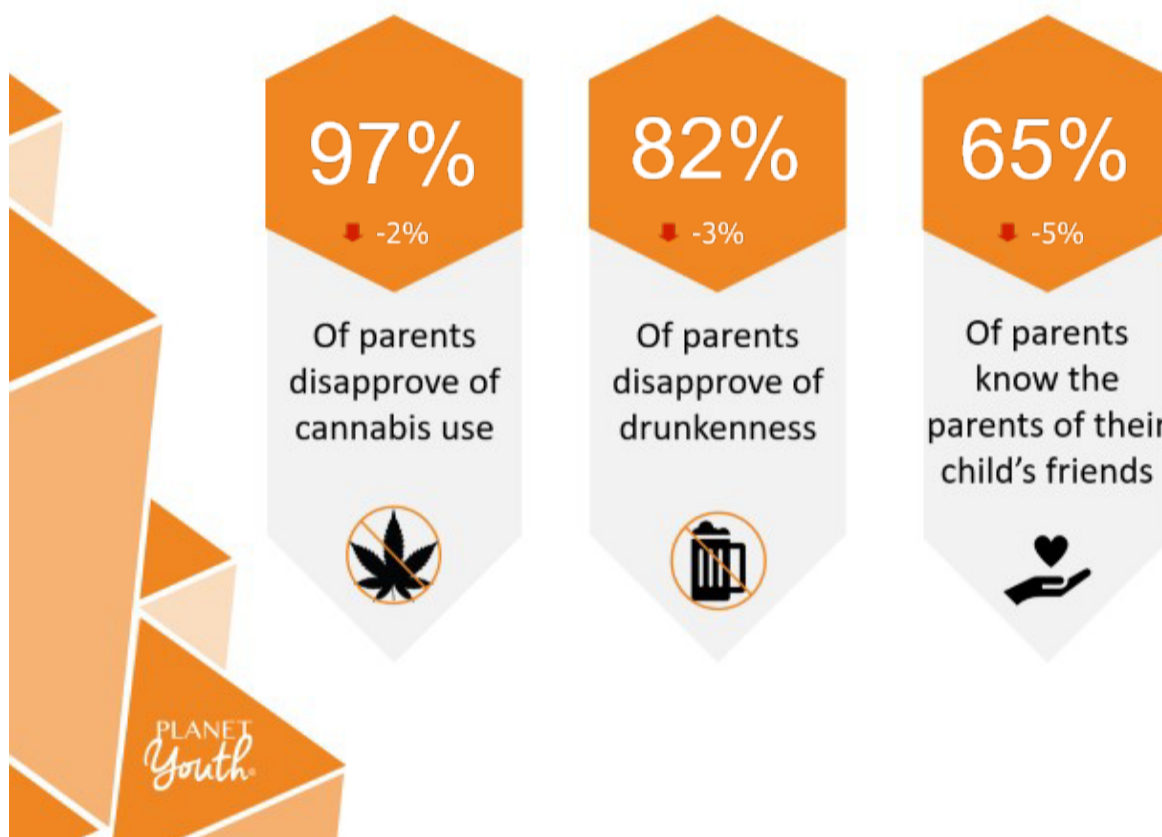
DO YOU KNOW WHERE YOUR KIDS ARE AT NIGHT?

What is Planet Youth? Planet Youth is a ground-breaking evidence based model, developed in Iceland, designed to reduce the risk factors and increase the protective factors associated with alcohol and drug use in our young people.

FACT: 18% of year 10's were outside after midnight once or more a week without their parents and nearly 40% had been drunk in the last 30 days

The Planet Youth team surveyed local Year 10 students and this is what kids believe their parents think.

Family – Key Findings



Time with parents - Boys

60% ↓ -7%



Of boys spend time with their parents on weekends

Time with parents - Girls

63% ↓ -3%

Of girls spend time with their parents on weekends



Parental monitoring

92% ↓ -3%



Of parents know where their teenagers are in the evenings

As a parent, what can you do?

Take action by:

- Getting to know the parents of your child's friends
- Be a collective voice for communicating about the importance of not allowing your children or your children's friend to drink alcohol. Anywhere. Anytime.

For more information about Planet Youth in the Limestone Coast – www.smlc.org.au

