

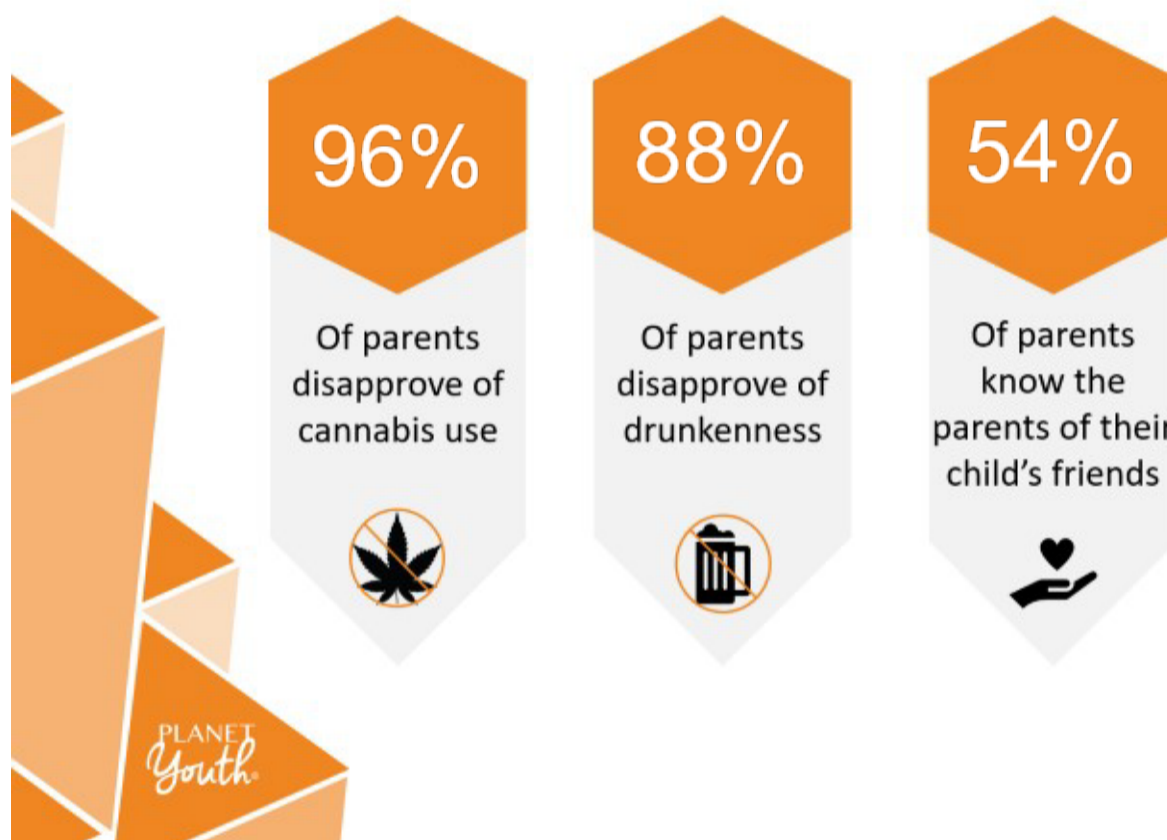
# DO YOU KNOW WHERE YOUR KIDS ARE AT NIGHT?

What is Planet Youth? Planet Youth is a ground-breaking evidence based model, developed in Iceland, designed to reduce the risk factors and increase the protective factors associated with alcohol and drug use in our young people.

**FACT: 29% of year 10's were outside after midnight once or more a week without their parents and 38% had been drunk in the last 30 days**

This is what they believe their parents think.

## Family – Key Findings



### Time with parents - Boys

66%



Of boys spend time with their parents on weekends

### Time with parents - Girls

50%

Of girls spend time with their parents on weekends



### Parental monitoring

85%



Of parents know where their teenagers are in the evenings

## As a parent, what can you do?

### Take action by:

- Getting to know the parents of your child's friends
- Be a collective voice for communicating about the importance of not allowing your children or your children's friends to drink alcohol. Anywhere. Anytime.

For more information about Planet Youth in the Limestone Coast – [www.smlc.org.au](http://www.smlc.org.au)

